



**ACCUWEIGH**

Onboard and Vehicle  
Weighing Systems

# LoadMaster 800i

The Loadmaster 800i, the market leading entry level on-board weighing system for wheeled loaders



The RDS Loadmaster 800i is a highly accurate on-board weighing system that can be installed on all types of loader.



# LOADMASTER 800i

## FEATURES

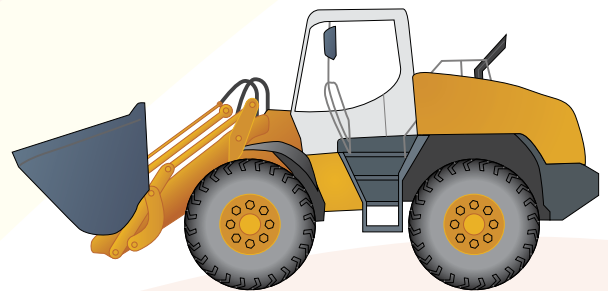
- Automatic, speed-compensated, dynamic weighing.
- Static weighing mode.
- Live last bucket tip off facility.
- Multiple attachment calibration.
- Slope compensation option.
- Overload logging.
- Net weighing (container/pallet weighing).
- Proven sensor technology.
- Display screen protected behind anti-glare acrylic lens.
- LCD graphic display.
- LED backlit screen and keypads.
- Large easy-to-read display for normal loading operation showing bucket load, target load, customer name, material handled and time.
- Enclosed by a heavy-duty ABS case with easy-clean finish.
- Universal double ball-jointed mounting bracket, allowing adjustment to virtually any angle.
- Optional panel mounting kit.

## BENEFITS

- Provides an operational guide.
- Eliminates return trips from the weighbridge of over/underloaded vehicles.
- Reduces weighbridge queues.
- Ensures lorries are correctly loaded first time.
- Improves site safety by eliminating unnecessary vehicle movements.
- Weighing 'on the lift' speeds operation, enabling operators to load more lorries per shift.

## KIT INCLUDES

- Head unit,
- 2 x Heavy duty load sensors,
- Vehicle hydraulic fitting kit,
- Connection box,
- Reference/direction sensors,
- Enter button for lift lever.



## TECHNICAL DATA

Approvals	ISO TR 10605, ISO 11452	System Accuracy	±2% or Better
Display	160 x 128 pixel (95mm x 75mm) Dot matrix - LED backlit	Load Sensor Rating	0-250 bar
Switches	Rubber membrane - sealed, tactile operation	Environmental Protection	Instrument unit IP34 External sensors IP65 Full RFI/EMI protection
Operating Voltage	11 - 30Vdc	Enclosure	ABS outer casing
Temperature Range	-40°C to +85°C Storage, -20°C to +70°C Operating	Dimensions	155mm x 220mm x 65mm (H x W x D); 0.75kg

## Accuweigh Pty Ltd

WESTERN AUSTRALIA (HEAD OFFICE):  
PHONE: (08) 9259 5535

SOUTH AUSTRALIA OFFICE:  
PHONE: (08) 8447 5011

NEW SOUTH WALES (SYDNEY) OFFICE:  
PHONE: (02) 9728 4877



[www.accuweigh.com.au](http://www.accuweigh.com.au)

VICTORIA OFFICE:  
PHONE: (03) 9548 5554

NEW SOUTH WALES (NEWCASTLE) OFFICE:  
PHONE: (02) 4966 8900

QUEENSLAND OFFICE:  
PHONE: (07) 3265 5520